

# CTSI Coordinator Connect

A product of the Clinical and Translational Science Institute (CTSI) at the University of Pittsburgh



## IN THIS ISSUE

- Research Resources: the THREAD platform
- Funding Opportunities
- CTSI Updates
- Regulatory Notes: National Institutes of Health (NIH): Updated Security Standards for Controlled Access Data
- Upcoming Events
- Spotlight on ENCLAVES for electronic health records research

Issue 21, Spring 2025

## RESEARCH RESOURCES:

### THREAD

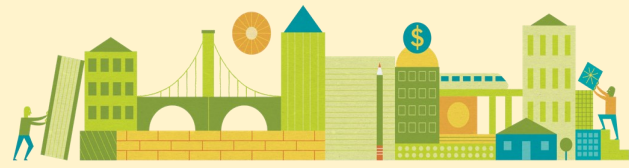
THREAD is a market-leading decentralized clinical research technology and consulting services provider whose research technology platform has been used in 3000+ research projects and 200+ deployed clinical studies, including large scale trials and registries across 60+ countries.

THREAD offers an enablement program to support adoption within academic institutions, in which researchers are trained to build, launch, and manage studies on THREAD's platform.

THREAD, in partnership with Pitt CTSI, provides a powerful, no code platform that makes research participation easier and safer for both participants and researchers with advanced features like:

- Study-specific participant applications
- eConsent & eCOA tools
- Virtual visits, voice and image capture
- Devices and sensors for real-time data
- Automated notifications and reminders
- Secure data collection and management
- Activity tracking and reporting dashboard
- 24/7 participant support

Thread is designed for engagement, with mobile-first tools, multilingual support, and intuitive interfaces that put participants first. It is built to scale: from small studies to large global trials, THREAD grows with your research. Whether you're running a local pilot or a global trial, THREAD makes it easier to reach, engage, and retain participants while collecting high-quality data. [Learn more about THREAD by clicking here!](#)



### Innovative Mental Health Services Research Not Involving Clinical Trials

This opportunity from the National Institute of Mental Health solicits research projects including but not limited to the following: (a) research identifying mutable factors that impact access, continuity, utilization, quality, value, and outcomes, including disparities in outcomes, or scalability of mental health services, which may serve as targets in future service delivery intervention development, (b) research that develops and tests new research tools, technologies, measures, or methods and statistical approaches to study these issues, and/or (c) research that integrates and analyzes large data sets to understand factors affecting mental health services outcomes using advanced computational and predictive analytic approaches. Wherever possible, projects should leverage existing infrastructure and partnerships to accomplish these goals.

### Advancing the Science of Engagement in Research

The Patient-Centered Outcomes Research Institute (PCORI) intends to release the Advancing the Science of Engagement in Research Funding Announcement on August 12, 2025 seeking to fund studies that build an evidence base on engagement in research, including:

- Measures to capture structure/context, process and outcomes of engagement in research.
- Techniques that lead to effective engagement in research.
- How effective engagement techniques should be modified and resourced for different contexts, settings and communities.

Online applications open August 12, and an applicant Town Hall will be held August 25.

# CTSI UPDATES

## Recharge Your Research

The CTSI Facilitator Team is hosting a monthly series on the first Tuesday of each month from 1 to 2 p.m. titled “Recharge Your Research.” Each session will begin with a 30-minute presentation and Q&A on the featured topic followed by 30 minutes of open discussion with CTSI facilitators. This is an opportunity to connect with other research staff members and CTSI Facilitators to ask questions and to feel supported in your work. All research related faculty and staff are welcome to attend! Come for presentations and stay to discuss any research related questions after. Our next event will be held on Tuesday, June 3; our topic will be Bridging the Gap: Community Engagement in Research. [Register here](#).

## Human Centered Design Training

CTSI offers Human-Centered Design Foundations for Health Research Certification training for research teams. Researchers who have completed HCD training have [found it highly beneficial](#), and report using HCD to refine interventions, uncover barriers to implementation, write innovative grants and manuscripts, and collect critical input from team members and community partners.

Pitt faculty and staff doing health research can take advantage of this valuable professional development opportunity to enhance their research. Register or join our waitlist for an upcoming training [here](#).

## Notes from the CTSI Community PARTners Core: Lunch and Learn

Join us June 12 at 1 p.m. when Dr. Cesar Escobar-Viera will address the topic of Loneliness and Social Support. We will be discussing the prevalence and effects of social loneliness and isolation and how community organizations and researchers can work to help bring more people together. Register [here](#)!

## REGULATORY NOTES

### National Institutes of Health (NIH): Updated Security Standards for Controlled Access Data

NIH has updated its security standards in the [NIH Security Best Practices for Controlled-Access Data Subject to the NIH Genomic Data Sharing \(GDS\) Policy](#) for approved users of controlled-access data under the [GDS Policy](#). Effective January 25, 2025, adherence to the updated security standards in the [NIH Security Best Practices for Users of Controlled-Access Data](#) is included in new or renewed [Data Use Certifications](#) or similar agreements. Users approved prior to January 25, 2025, should secure data according to the [NIH Security Best Practices for Controlled-Access Data Subject to the NIH Genomic Data Sharing \(GDS\) Policy](#) until project close-out or renewal. Additionally, NIH controlled-access data repositories in scope of the Guide Notice will be expected to secure data according to the [NIH Security Best Practices for Controlled-Access Data Repositories](#).

More here: [NIH Security Best Practices for Controlled-Access Data and Repositories | Data Sharing](#)

## UPCOMING EVENTS

Thursday, June 5 | 1 to 2:30 p.m.

### [Evaluating Generative AI for your Research Workflow](#)

Presented by the University of Pittsburgh  
Health Sciences Library System  
*Virtual Event*

Thursday, June 5 | 1 to 2 p.m.

### [Patient Recruitment Success Stories](#)

Presented by Clinical Leader  
*Virtual Event*

Tuesday, June 10 | 9 to 10 a.m.

### [Idea to Impact: Coffee and Conversation](#)

Sponsored by University of Pittsburgh's Office of  
Innovation and Entrepreneurship (OIE)  
In person event at the Big Idea Center, corner of Forbes  
and Meyran

### [An Expert's Share: Tools We Use Everyday](#)

Presented the Trial Innovation Network  
*Recorded Webinar*

### [Understanding Decentralized Clinical Trials](#)

Presented by the Center for Information and Study on  
Clinical Research Participation (CISCRP)  
*Recorded Webinar*

Keep up to date on Executive Orders and federal  
funding [here](#)

## Spotlight on Enclaves for Electronic Health Record Research

### Unlock the Power of ENACT Enclaves

The ENACT Network is revolutionizing how researchers use electronic health records (EHRs) to unlock groundbreaking insights. At the forefront of this transformation are **ENACT Enclaves** - secure, study-specific, and time-limited environments enabling advanced analyses, including AI and machine learning, while upholding the highest standards of data security and compliance. Dive deeper into how ENACT Enclaves can propel your research forward by visiting our dedicated page: Explore [ENACT Enclaves](#).

### Why Enclaves Are a Game-Changer

Enclaves provide a secure digital space where research teams can:

- Access and analyze EHR data using state-of-the-art tools.
- Collaborate seamlessly with colleagues from the ENACT Network who are also participating in an Enclave.
- Generate meaningful insights that address pressing healthcare questions.

In addition to these capabilities, ENACT Enclaves are designed to integrate effortlessly into your workflow, simplifying the process of turning data into impactful discoveries.

### Take the Next Steps

To start participating in the ENACT Enclave environment:

**At the site level:** Complete our [intake form](#) with the appropriate contact information to route the data transfer agreement and IRB reliance. Review the governance and regulatory guidance: Documents are found at the bottom of the enclave [webpage](#).

[Training](#) | [Resources](#) | [ENACT](#)

## Questions for us?

We'd love to hear from you: [ctsi@pitt.edu](mailto:ctsi@pitt.edu)

Pitt+Me questions: [ASKPPM@pitt.edu](mailto:ASKPPM@pitt.edu)

**PittCTSI**  
Clinical and Translational  
Science Institute